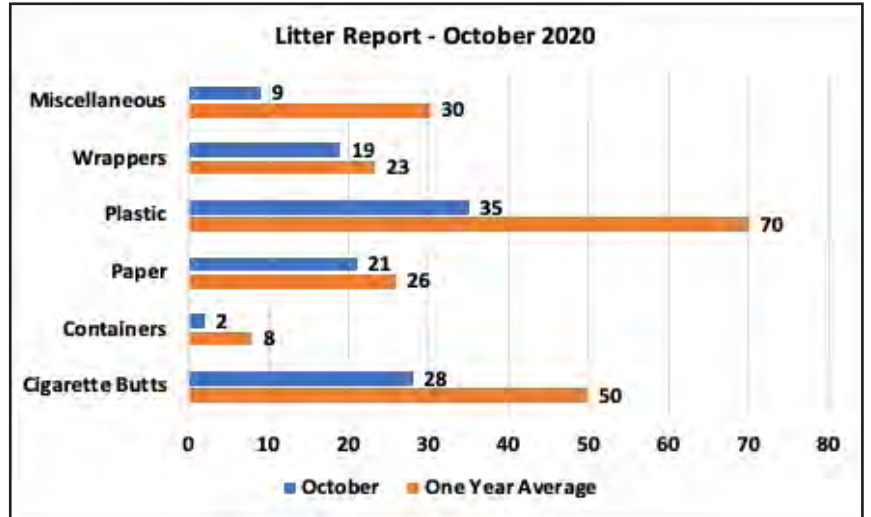


Stoney Creek Trail Litter Report

October 2020

The chart on the right shows that the amount of litter this month was considerably below average. One has difficulty explaining why. Perhaps it was simply that there were fewer people walking the trail. It can't be because the weather was worse than usual. Was it because the pandemic caused people to be more conscious of each other's behaviour? Your guess is as good as mine.



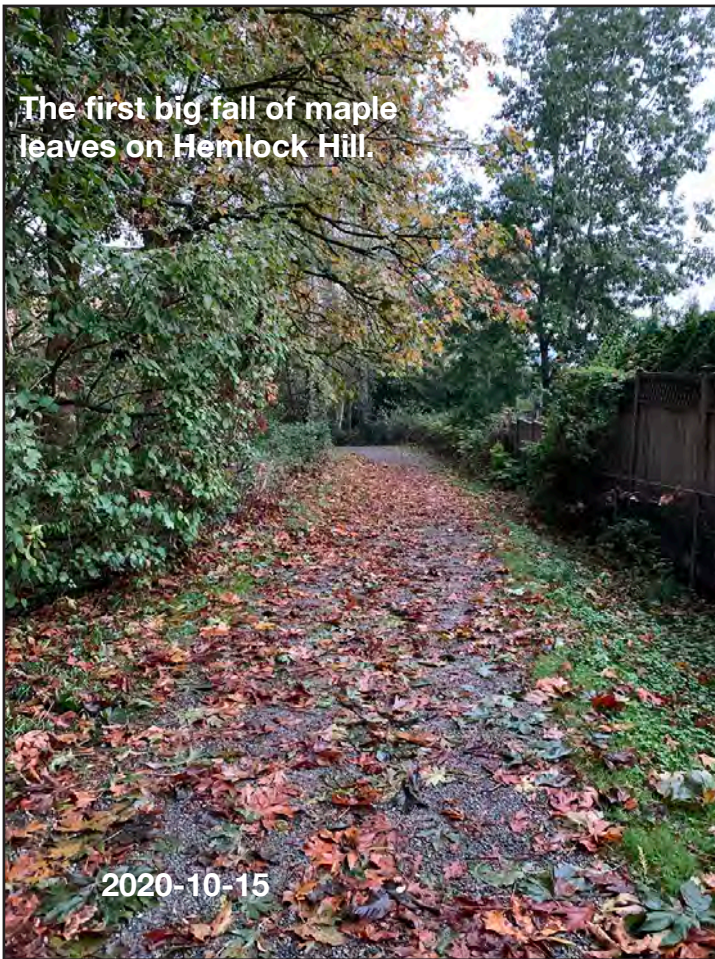
Miscellaneous: clothing, glass, chewing gum, balls & fragments, etc.
Wrappers: candy wrappers, foil, cellophane
Plastic: doggy poo bags & scraps, plastic bags
Paper: tissues, napkins, receipts, newspaper, cardboard, etc.
Containers: bottles, coffee cups, cans, juice boxes, bottle tops

This month did not bring a “cold snap.” The temperature dropped slightly below 0° on only three days in the last third of the month, so the colours of the fallen leaves are more subdued than usual. Nevertheless, they are as rich and plentiful as ever.



A carpet of “cornflakes” near Bridge 5—mostly bigleaf maple leaves.

2020-10-30



The first big fall of maple leaves on Hemlock Hill.

2020-10-15



The cedar trees normally shed their inner (oldest) leaves in preparation for winter. These will make a dense carpet in many places on the trail.

2020-10-18



A carpet of "cornflakes" just south of Bridge 4.

2020-10-24



The Parks crew blew the leaves nicely off the trail on the 25th, but it will have to be done again.

2020-10-28



Autumn leaves (clockwise from top left):

- cottonwood,
- maple,
- hawthorn,
- alder,
- willow,
- vine maple,
- birch,
- oak.





On the 23rd, in spite of a low water level, salmon arrived to spawn in the Creek. They have been identified as Chum salmon by the purplish slashes on their sides. These photos were taken near Bridge 1 (no fish were seen above Bridge 2).

On the 28th, two members of the Abbotsford Ravine Park Salmon Enhancement Society (ARPSES) carried out a survey. They reported finding 25 Chum, 8 live and 17 dead. Their size is always a surprise: some of the fish were 10 lbs or better. Their splashing could still be heard near Bridge 1 at the end of the month.

The Chum are totally wild stock, not hatchery fish like the Coho. They normally arrive before the Coho, which usually show up within a day or two of Hallowe'en. However, in some years none are seen.

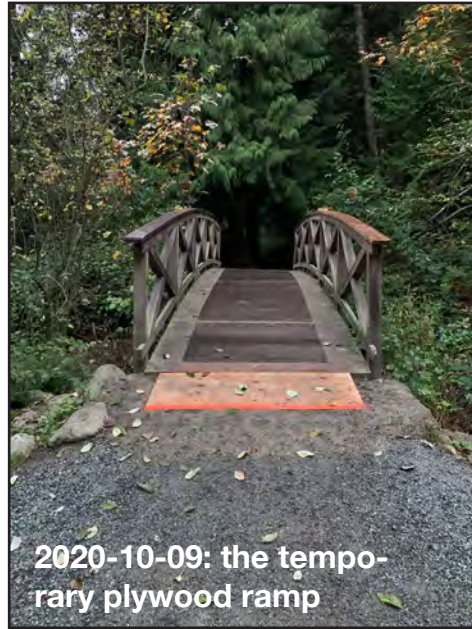


Some unusual sightings: a pair of dog tags and a forlorn shoe; a small, green intruder on Bridge 4; a lost flying toy; and a cascara tree down on Bridge 4.



New and improved:

The Parks Department apparently has decided that the original metal ramps on the bridges are unsatisfactory. So far, the older ramps on three bridges have been replaced by newer ones which are bright yellow and have a “grabbier” surface texture. I expect they are going to be much safer to walk on, especially in the wet or icy conditions of winter, due to much improved visibility and traction.



Rainfall report (based on observations made at YXX): The month of October was dry for the first week or so, then on the 9th a big storm hit. It rained for three days straight, dumping a total of 65.2 mm (2½ inches). Persistent, gusting winds were in the 40-50 km/h range, peaking at 85 km/h on the 13th. The total rainfall for the month was 124.9 mm (5 inches). This compares to the 50 mm average for the preceding three months.

It is unfortunate that the rainfall later in the month did not have an appreciable effect on the creek water level for the benefit of the salmon.

Dave Rutherford
Trail Volunteer

